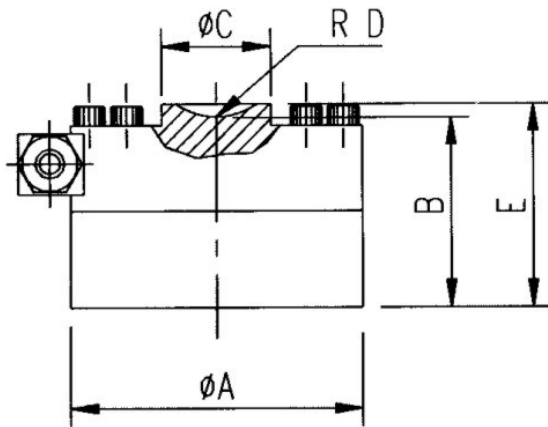




CLP

SPECIFICATIONS

		CLP-G	CLP-S	CLP-B
Rated Output	mV/V	2	2	2
Temperature Effect on Output / °C	%RO	0,001	0,002	0,004
Temperature Effect on Zero Signal / °C	%RO	0,001	0,002	0,004
Combined Error: Linearity & Hysteresis	%RO	0,03	0,05	0,10
Creep after 20 min. at 23 °C	%RO	0,03	0,04	0,06
Input Resistance ± 0,1%	ohm	350	350	350
Recommended Excitation AC/DC	V	5-15	5-15	5-15



DIMENSIONS

CAPACITY	100T	200T
A	278	350
B	180	180
C	120	145
D	100	127

Technical Modifications Reserved
All dimensions in mm.