

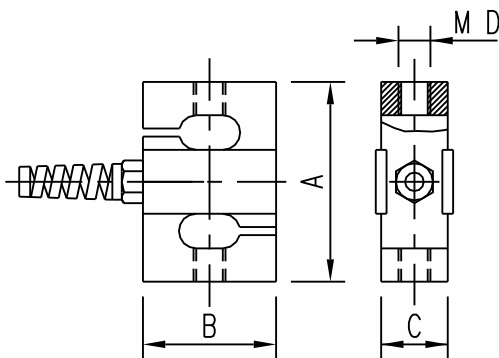
SUB



A sealed universal block loadcell is well suited for most low cost capacity weighing and force measurement, both in compression and tension, these units are sealed and can be used in applications that are directly exposed to the weather.

SPECIFICATIONS

		SUB-G	SUB-S	SUB-B
Rated output	mV/V	3	3	3
Temperature effect on Output/°C	%RO	0.001	0.002	0.004
Temperature effect on Zero signal/°C	%RO	0.001	0.002	0.004
Combined error: Linearity & Hysteresis	%RO	0.03	0.05	0.10
Creep after 20 min. at 23°C	%RO	0.03	0.04	0.06
Input resistance ± 1%	Ω	350	350	350
Recommended excitation AC/DC	V	5-15	5-15	5-15



DIMENSIONS

CAPACITY	50K-100K	150K-500K
A	65	75
B	51	51
C	12	25
D	M8	M12

All dimensions in mm • Technical Modifications Reserved

Manufactured by:
 TRANSDUCER DEVELOPMENTS COMPANY
 Pretoria, RSA
 Tel: +27 12 327-7700
 Fax: +27 12 327-6652

Supplied by:

