

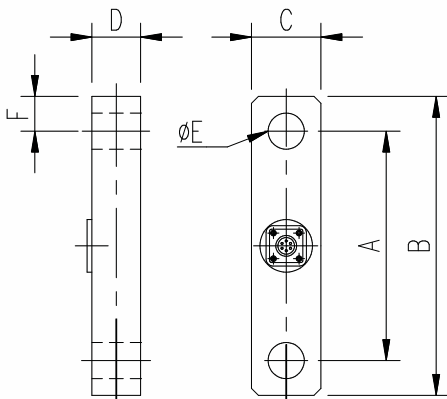
# TLE



The tensile link loadcell is specifically designed for in-line measurement of tensile forces, crane weighing and mass determination of suspended loads.

## SPECIFICATIONS

		TLE-B	TLE-R
Rated output	mV/V	1.5	1.5
Temperature effect on Output/°C	%RO	0.004	0.004
Temperature effect on Zero/°C	%RO	0.004	0.004
Combined error: Linearity & Hysteresis	%RO	0.1	0.2
Creep after 20 min. at 23°C	%RO	0.06	0.08
Input resistance $\pm 0.1\%$	$\Omega$	350	350
Recommended excitation AC/DC	V	5-15	5-15



## DIMENSIONS

CAPACITY	5T	10T	20T	50T	100T
A	165	215	275	375	500
B	215	285	375	525	800
C	50	70	100	150	200
D	35	50	72	104	133
E	26	37	52	74	95
F	25	35	50	75	148.5

All dimensions in mm • Technical Modifications Reserved

Manufactured by:  
 TRANSDUCER DEVELOPMENTS COMPANY  
 Pretoria, RSA  
 Tel: +27 12 327-7700  
 Fax: +27 12 327-6652

Supplied by:

