

ULS STAINLESS STEEL



The universal low profile loadcell shear web design has many advantages compared to the conventional columnar loadcell. Apart from its relatively compact dimensions, the design is inherently more resistant to bending, off-centre loading and side load effects.

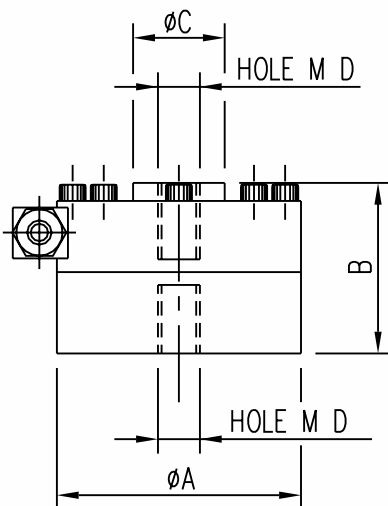
SPECIFICATIONS

		ULS-G	ULS-S	ULS-B
Rated output	mV/V	2	2	2
Temperature effect on output/°C	%RO	0,001	0,002	0,004
Temperature effect on Zero signal/°C	%RO	0,001	0,002	0,004
Combined error: Linearity & Hysteresis	%RO	0,03	0,05	0,10
Creep after 20 min. at 23°C	%RO	0,03	0,04	0,06
Input resistance ± 1%	Ω	350	350	350
Recommended excitation AC/DC	V	5-15	5-15	5-15

DIMENSIONS

CAPACITY	1T/2T	5T	10T/20T	50T	100T	200T
A	105	120	155	200	278	350
B	70	80	90	120	180	180
C	31	45	65	80	120	145
D	M14 x 2 25 Deep	M20 x 1.5 30 Deep	M32 x 2 35 Deep	M45 x 3 50Deep	M70 x 3 80 Deep	M80 x 3 80 Deep

All dimensions in mm • Technical Modifications Reserved



Manufactured by:
 TRANSDUCER DEVELOPMENTS COMPANY
 Pretoria, RSA
 Tel: +27 12 327-7700
 Fax: +27 12 327-6652

Supplied by:

